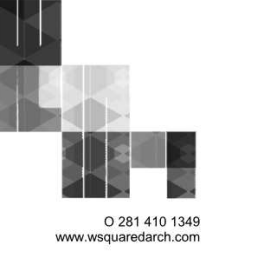


DLDEngineering
 18106 FIRST BEND DR.
 CYPRESS, TX. 77433
 O:832.422.9350

ARCHITECT



W SQUARE ARCHITECTS

DESIGN ARCHITECT
 W SQUARE ARCHITECTS
 3302 CANAL STREET, SUITE 36
 HOUSTON, TX 77003
 PHONE: (281) 410-1349

GREATER HEIGHTS SCHOOL
 HOUSTON, TEXAS



07/22/2019
TEXAS REGISTERED ENGINEERING FIRM
 F-17306
 THE INFORMATION DISCLOSED HEREIN IS PROPRIETARY WITH DLD ENGINEERING LLC., AND SHOULD NOT BE USED, DUPLICATED OR DISCLOSED WITHOUT ITS EXPRESS WRITTEN PERMISSION.

UNAUTHORIZED USE OR COPYING OF THIS OR ANY CONTENTS HEREOF IS STRICTLY FORBIDDEN

PROJECT: 002-1029.19.00
 DRAWN BY: PM
 CHECKED BY: SS
 DRAWING SCALE: AS NOTED

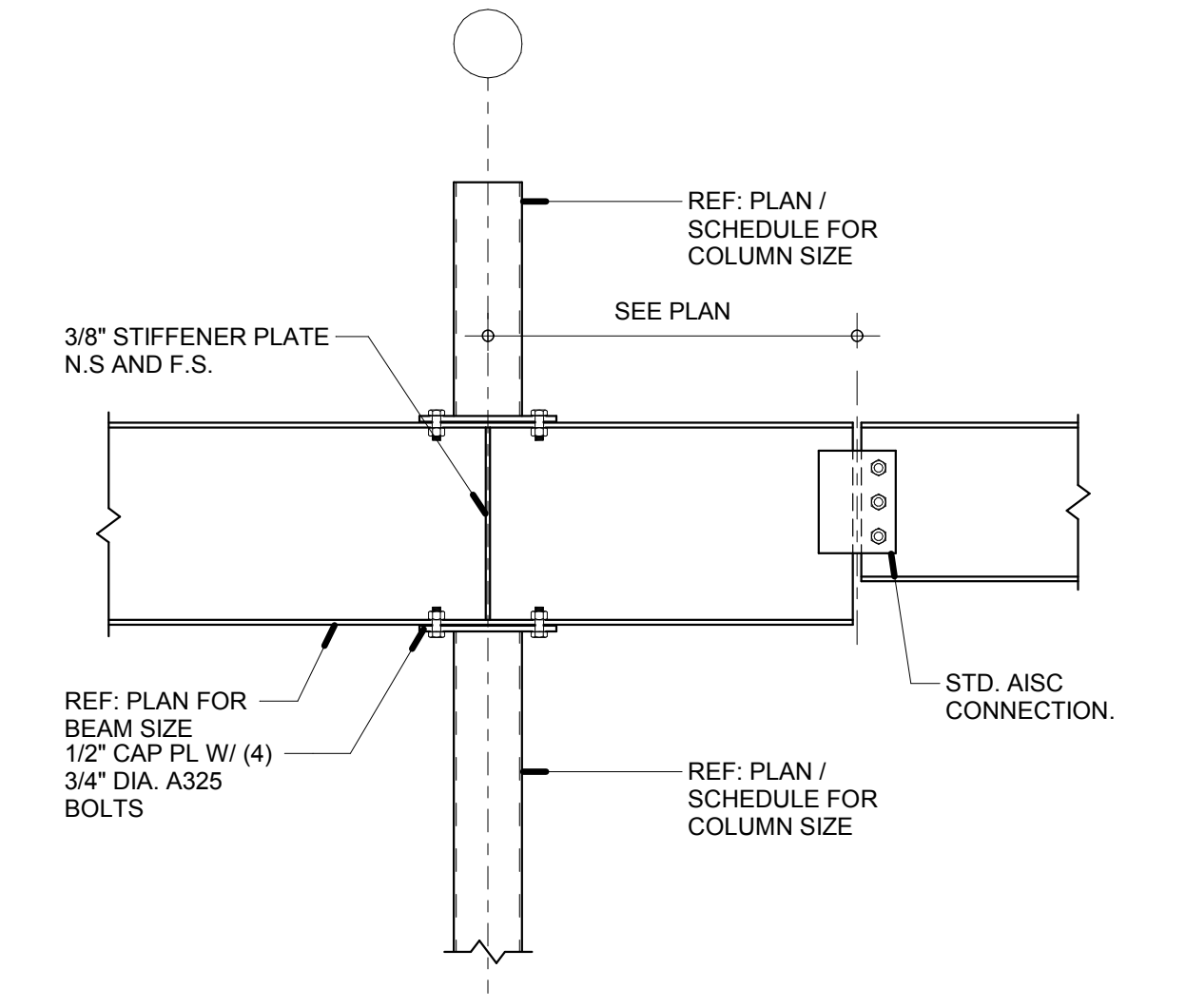
REVISION NO.	DESCRIPTION	DATE

DATE: **07.22.2019**
 ISSUE: **PERMIT SET**

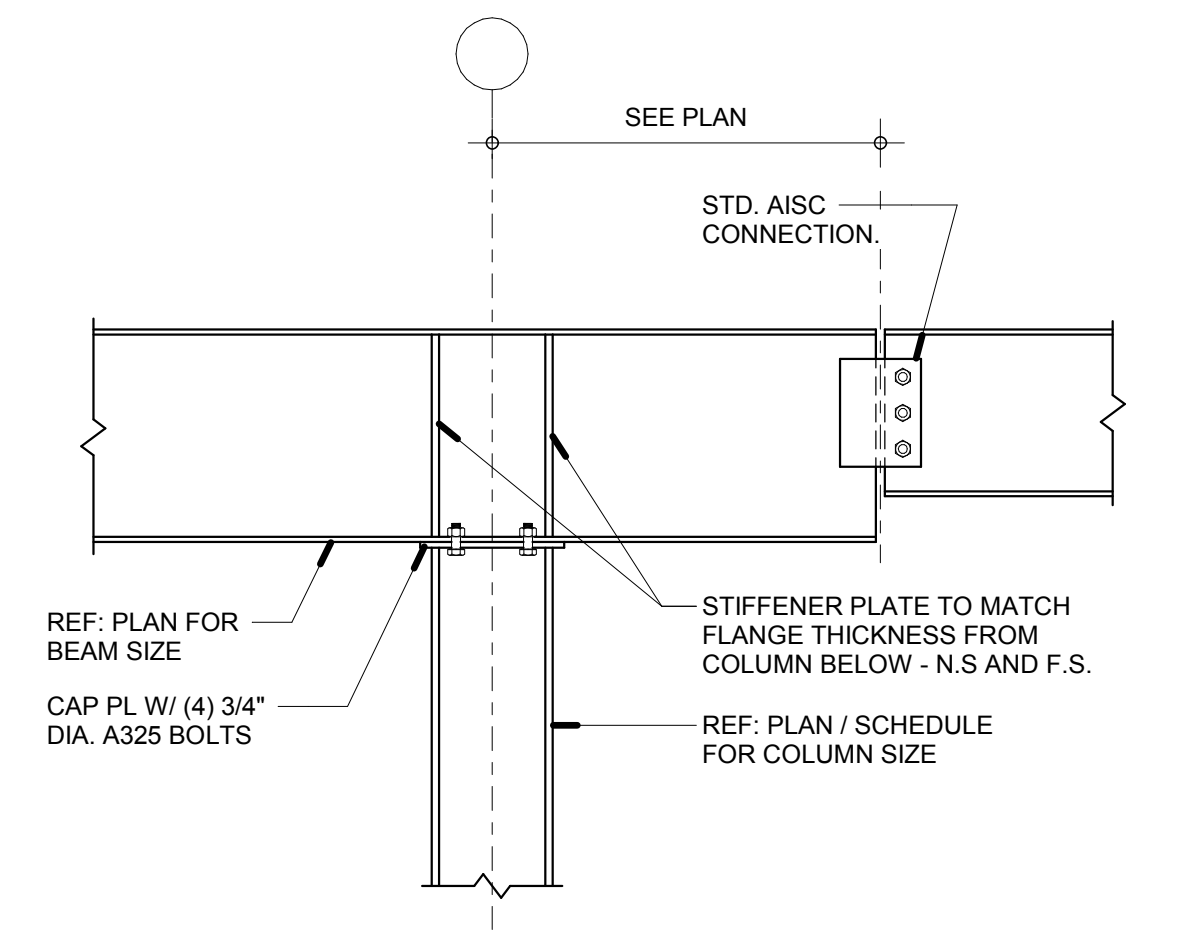
BUILDING TITLE: **GH SCHOOL**
4724 N MAIN STREET

SHEET TITLE: **FRAMING DETAILS**

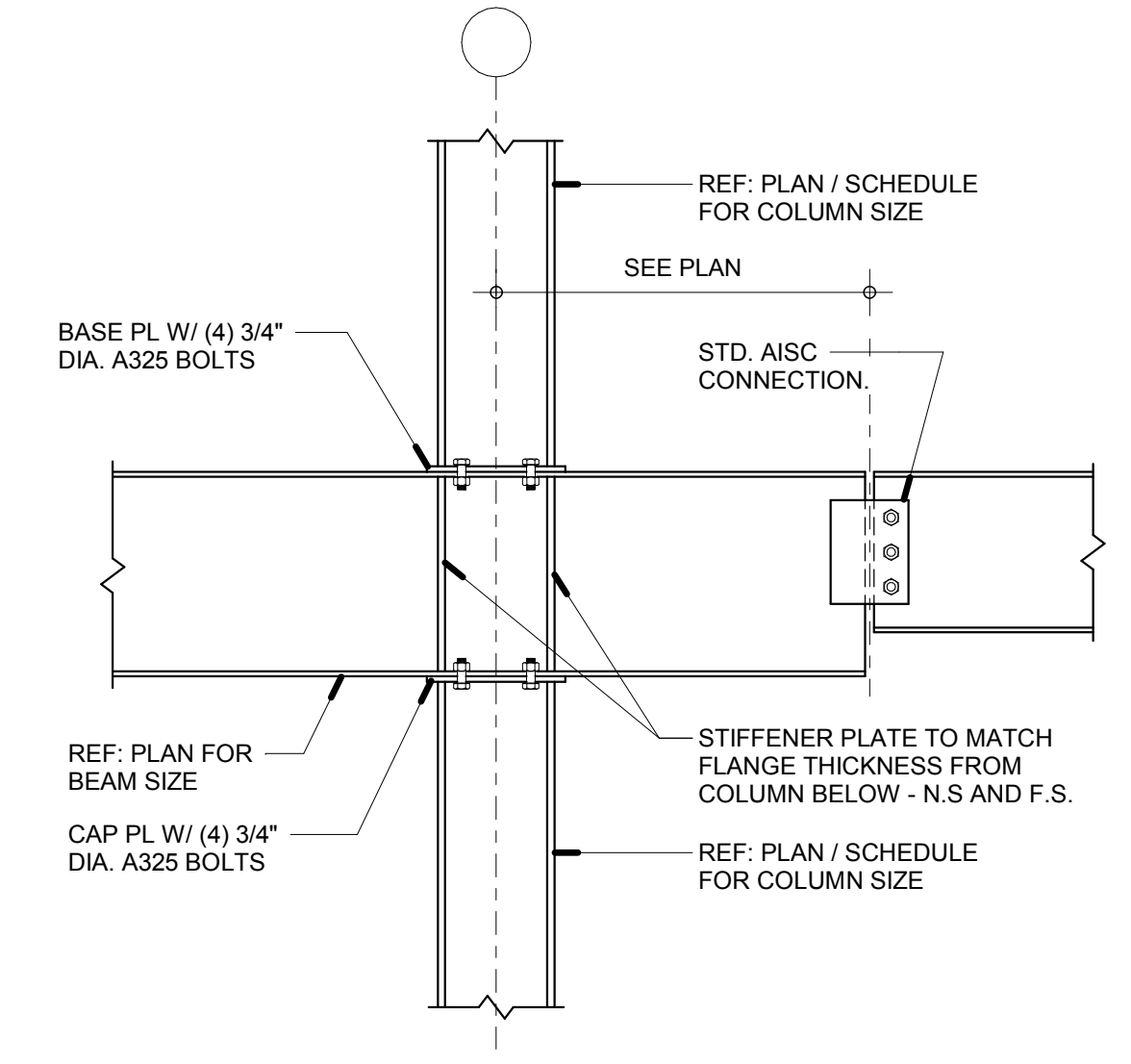
SHEET NO. **S300**



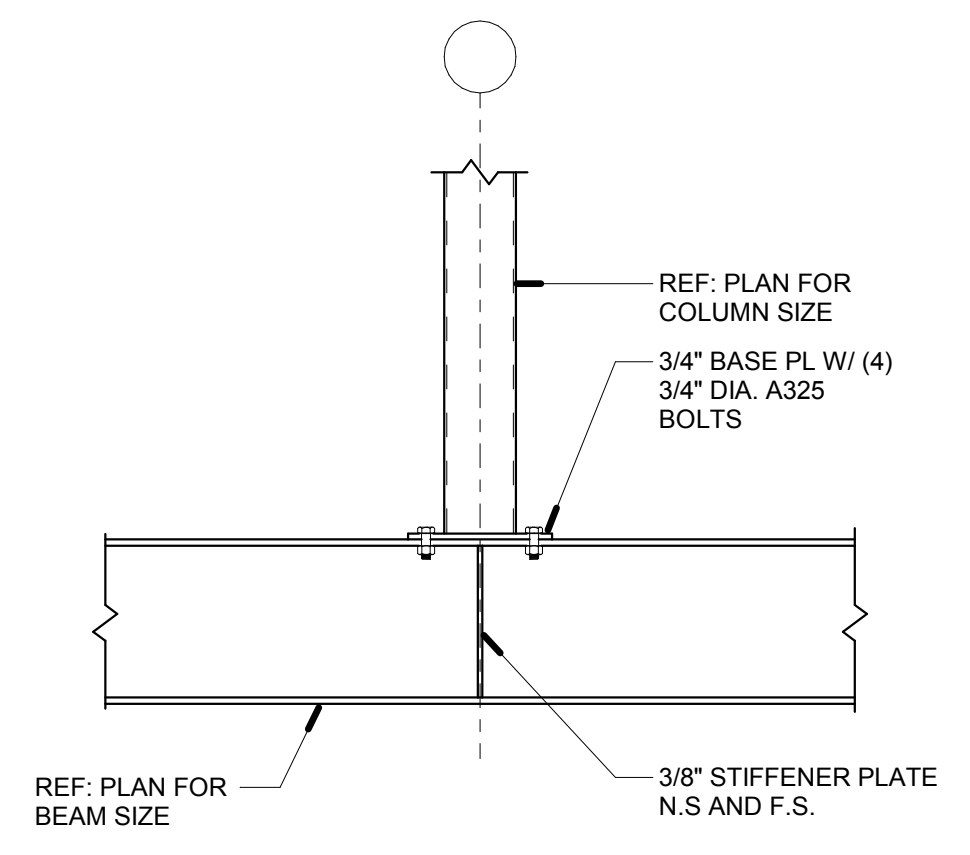
8 TYPICAL BEAM SPLICE-OVER COLUMN DETAIL
 3/4" = 1'-0"



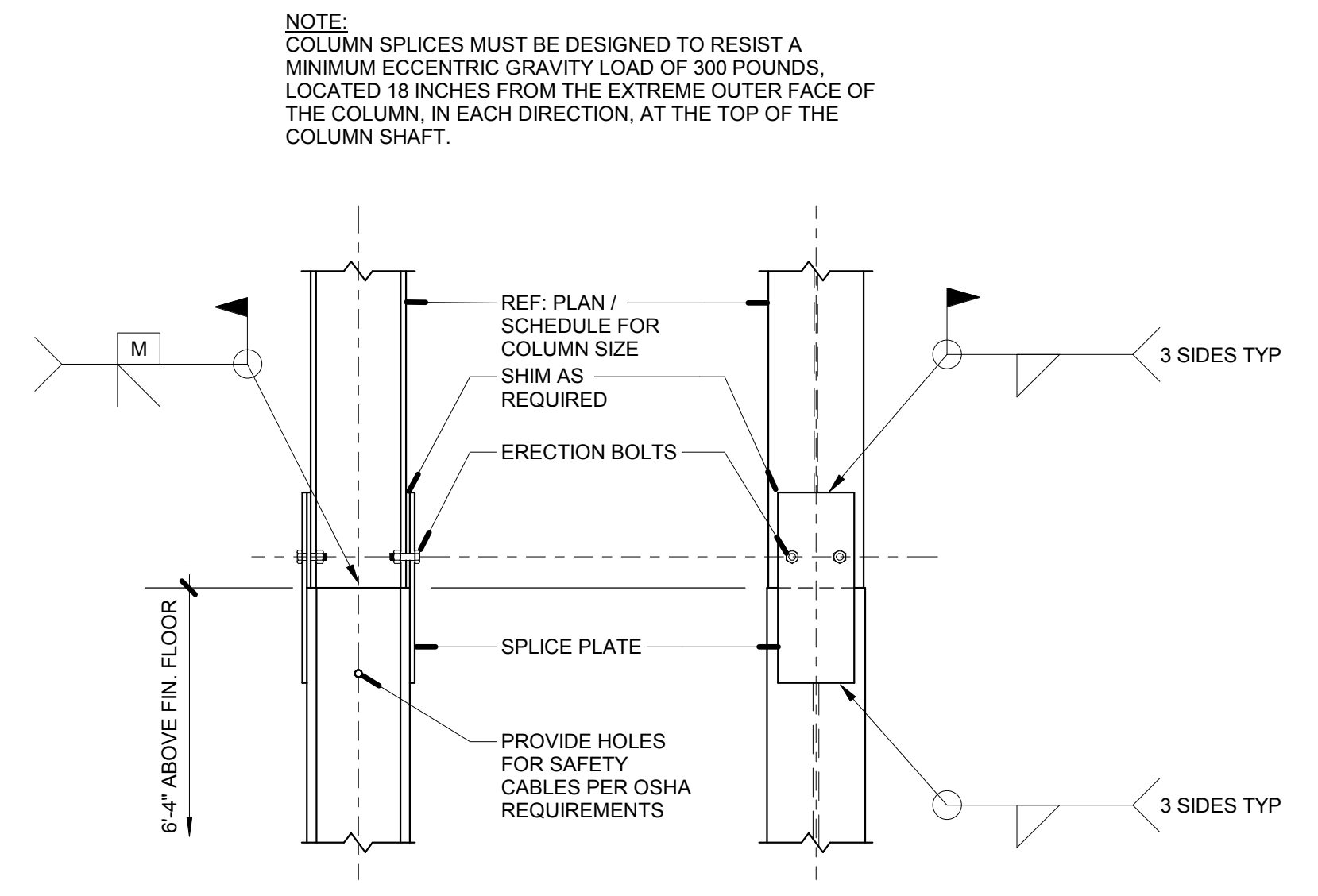
9 TYPICAL BEAM SPLICE-OVER COLUMN DETAIL
 3/4" = 1'-0"



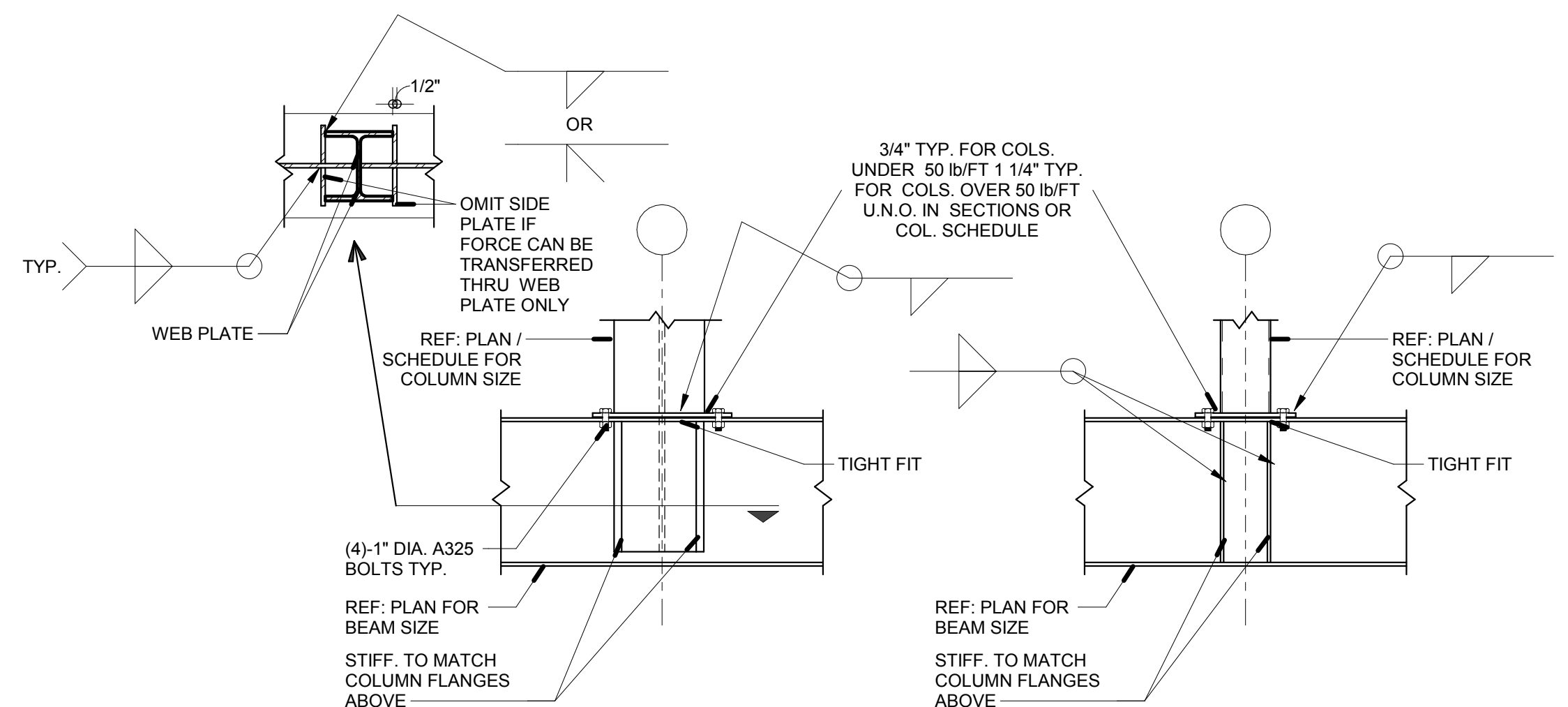
10 TYPICAL BEAM SPLICE-OVER COLUMN DETAIL
 3/4" = 1'-0"



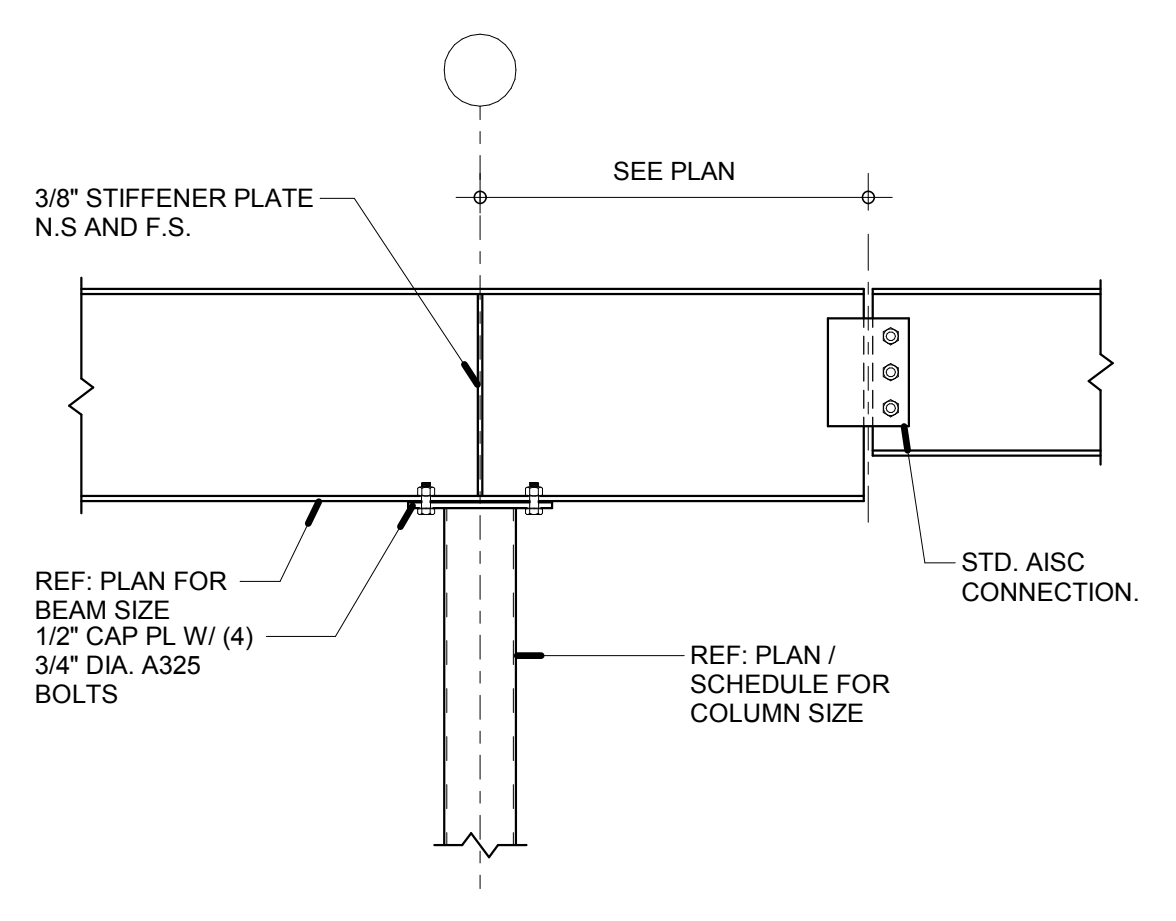
11 TYPICAL BEAM SPLICE-OVER COLUMN DETAIL
 3/4" = 1'-0"



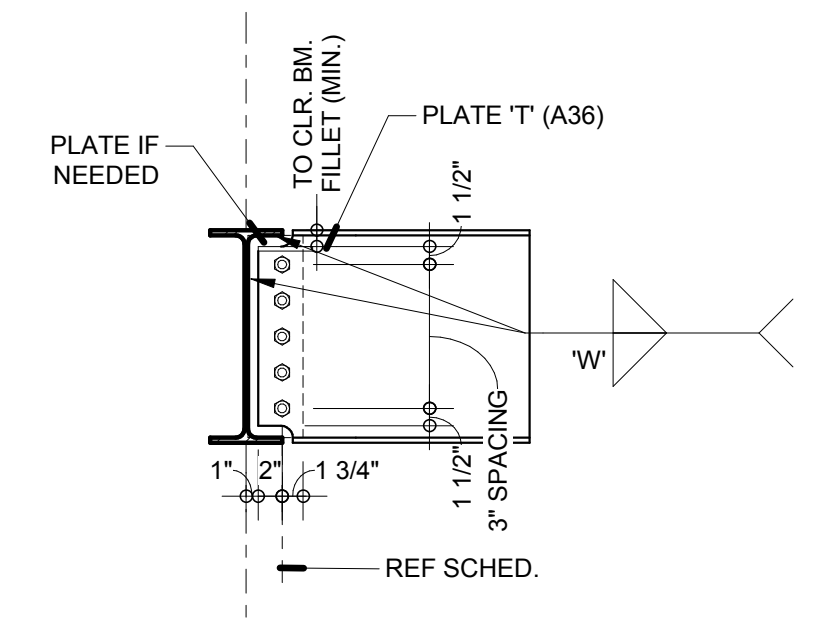
5 TYPICAL COLUMN SPLICE
 3/4" = 1'-0"



6 TYP. COLUMN BASE PLATE AND ANCHOR BOLT DETAIL
 3/4" = 1'-0"



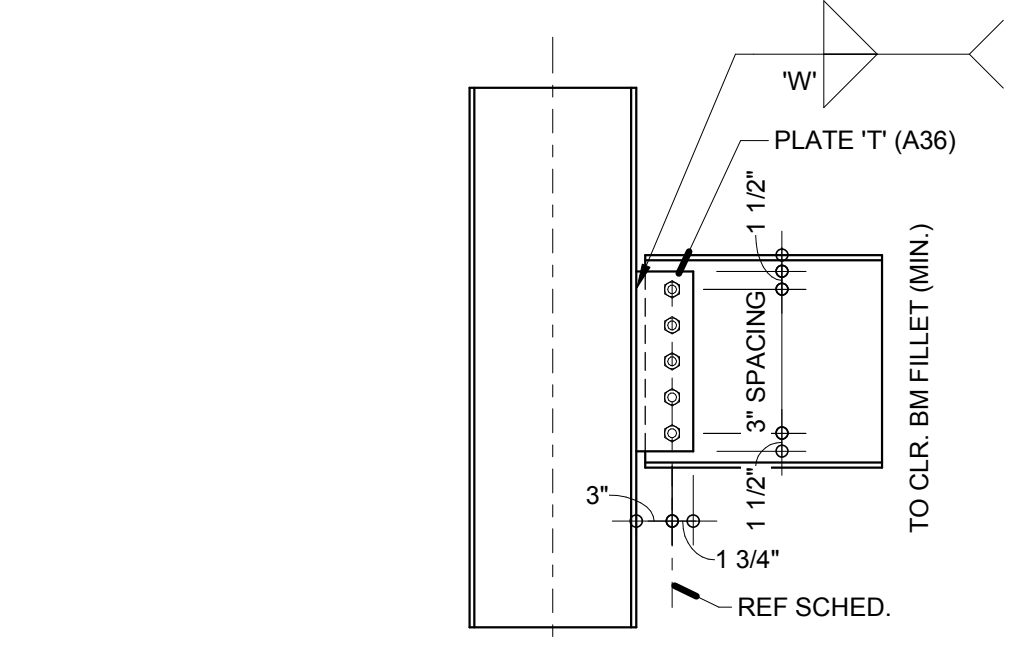
7 TYPICAL BEAM SPLICE-OVER COLUMN DETAIL
 3/4" = 1'-0"



BEAM SIZE	NO. OF BOLTS A325-X (STD)	WELD SIZE 'W'	PLATE THK. 't'	MAXIMUM ASD REACTION(k)
W8	2 3/4" DIA.	1/4"	3/8"	12
W10	2 7/8" DIA.	1/4"	3/8"	12
W12	3 7/8" DIA.	1/4"	3/8"	25
W14	3 7/8" DIA.	1/4"	3/8"	25
W16	4 7/8" DIA.	1/4"	3/8"	48
W18	5 7/8" DIA.	1/4"	1/2"	69
W21	6 7/8" DIA.	1/4"	1/2"	90
W24	7 7/8" DIA.	1/4"	1/2"	109
W27	8 7/8" DIA.	1/4"	1/2"	128
W30	8 7/8" DIA.	1/4"	1/2"	128
W33	9 7/8" DIA.	1/4"	1/2"	147
W36	10 7/8" DIA.	1/4"	1/2"	166

NOTE:
 • ALL WELDS TO BE LARGER OF SCHEDULED WELD OR AISC MIN.
 • IF AXIAL FORCE [P] SHOWN ON DRAWING IS GREATER THAN TABULATED VALUE, CONNECTION NEEDS TO BE DETAILED FOR END REACTION AND AXIAL FORCE ALLOWING 1/3RD INCREASE IN STRESSES AND CONSIDERING EFFECT OF ECCENTRICITIES OF END REACTION AND AXIAL FORCE.

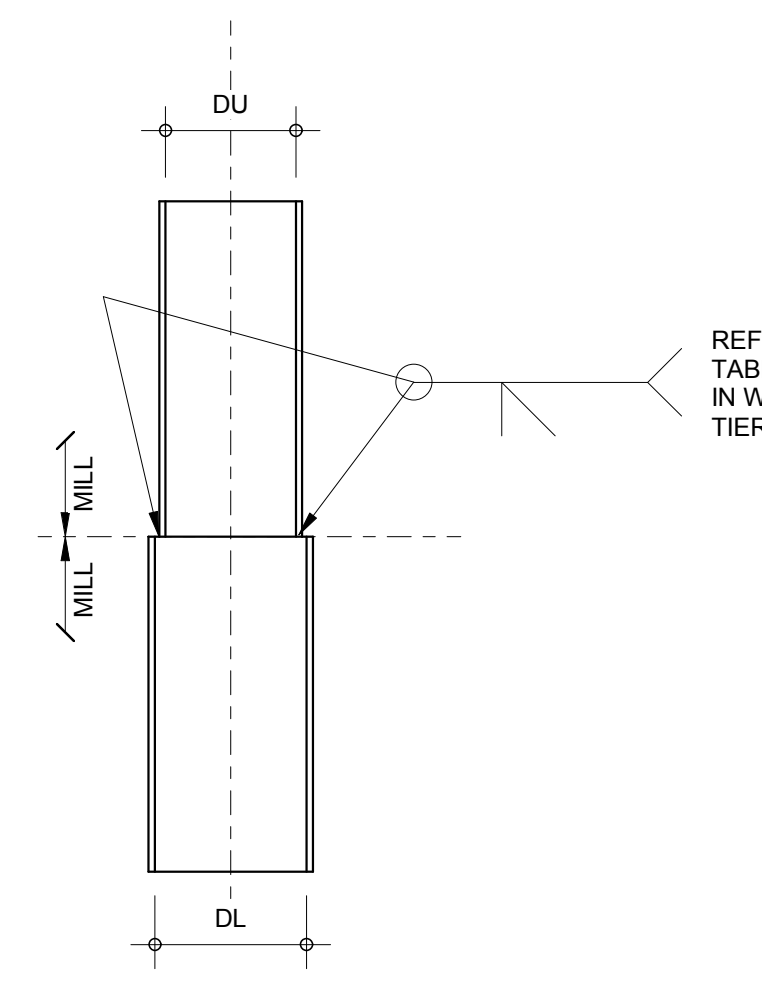
2 TYPICAL BEAM TO BEAM SHEAR CONNECTION FOR GRAVITY BEAMS, U.N.O.
 3/4" = 1'-0"



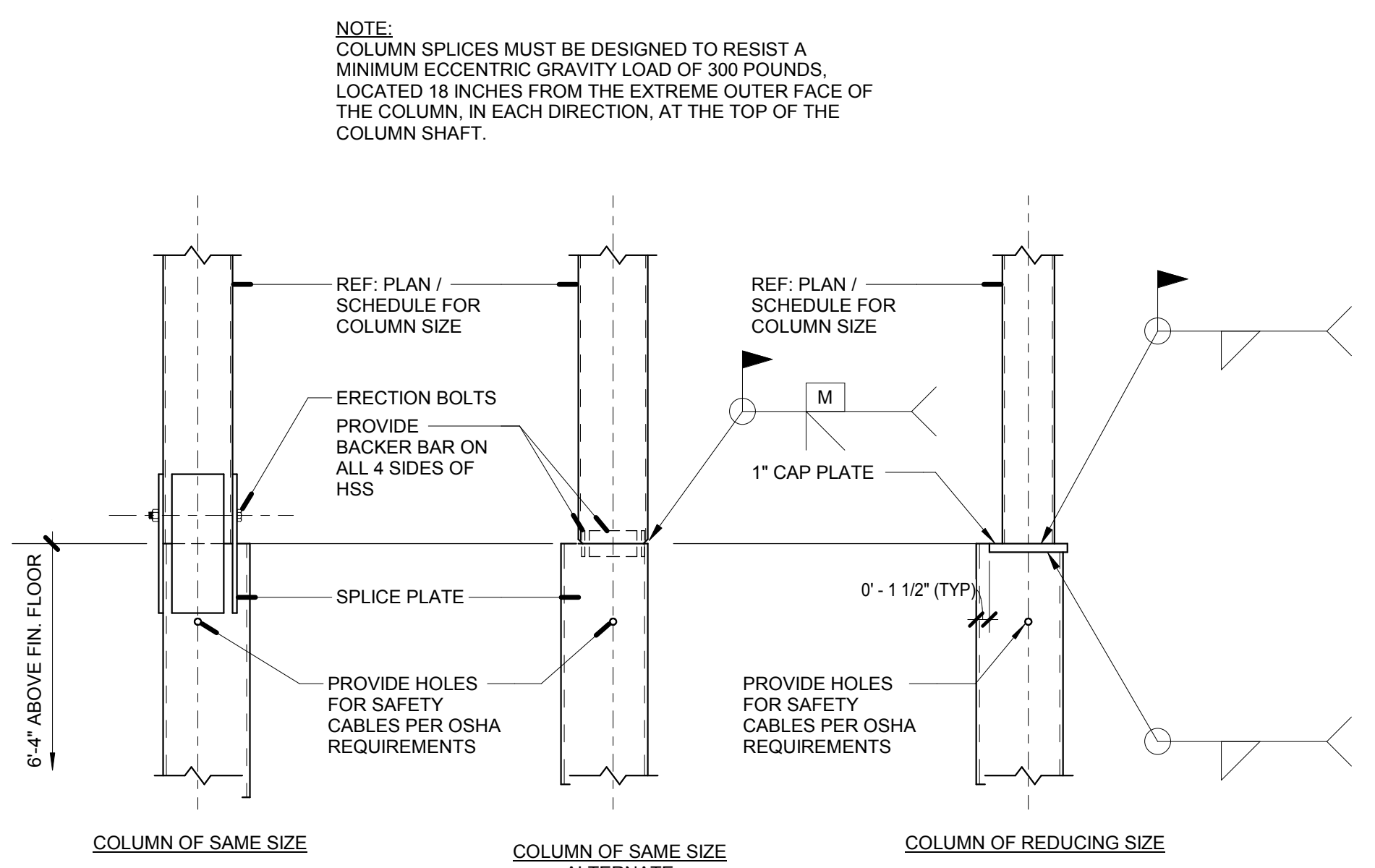
BEAM SIZE	NO. OF BOLTS A325-X (STD)	WELD SIZE 'W'	PLATE THK. 't'	MAXIMUM ASD REACTION(k)	AXIAL FORCE [P] IN KIPS
W12 & W14	3 7/8" DIA.	1/4"	1/2"	25	10
W16	3 7/8" DIA.	5/16"	1/2"	48	15
W18	5 7/8" DIA.	5/16"	5/8"	69	20
W21	6 7/8" DIA.	5/16"	5/8"	90	25
W24	7 7/8" DIA.	5/16"	3/4"	109	30
W27, W30	8 7/8" DIA.	5/16"	3/4"	128	35
W33	9 7/8" DIA.	5/16"	3/4"	147	40
W36	10 7/8" DIA.	5/16"	3/4"	166	50

NOTE:
 • COLUMN IN NON-MOMENT RESISTING FRAMING (GRAVITY COLUMN)
 • IF AXIAL FORCE [P] SHOWN ON DRAWING IS GREATER THAN TABULATED VALUE, CONNECTION NEEDS TO BE DETAILED FOR END REACTION AND AXIAL FORCE ALLOWING 1/3RD INCREASE IN STRESSES AND CONSIDERING EFFECT OF ECCENTRICITIES OF END REACTION AND AXIAL FORCE.

1 TYPICAL DEAM TO COLUMN SHEAR CONNECTION AT FLANGE, U.N.O.
 3/4" = 1'-0"



3 COLUMN SPLICE Du = D1
 3/4" = 1'-0"



4 TYPICAL COLUMN SPLICE
 3/4" = 1'-0"

NOTE:
 COLUMN SPLICES MUST BE DESIGNED TO RESIST A MINIMUM ECCENTRIC GRAVITY LOAD OF 300 POUNDS, LOCATED 18 INCHES FROM THE EXTREME OUTER FACE OF THE COLUMN, IN EACH DIRECTION, AT THE TOP OF THE COLUMN SHAFT.

PLOT DATE: 8/16/2019 8:22:09 PM TEMPLATE VERSION: